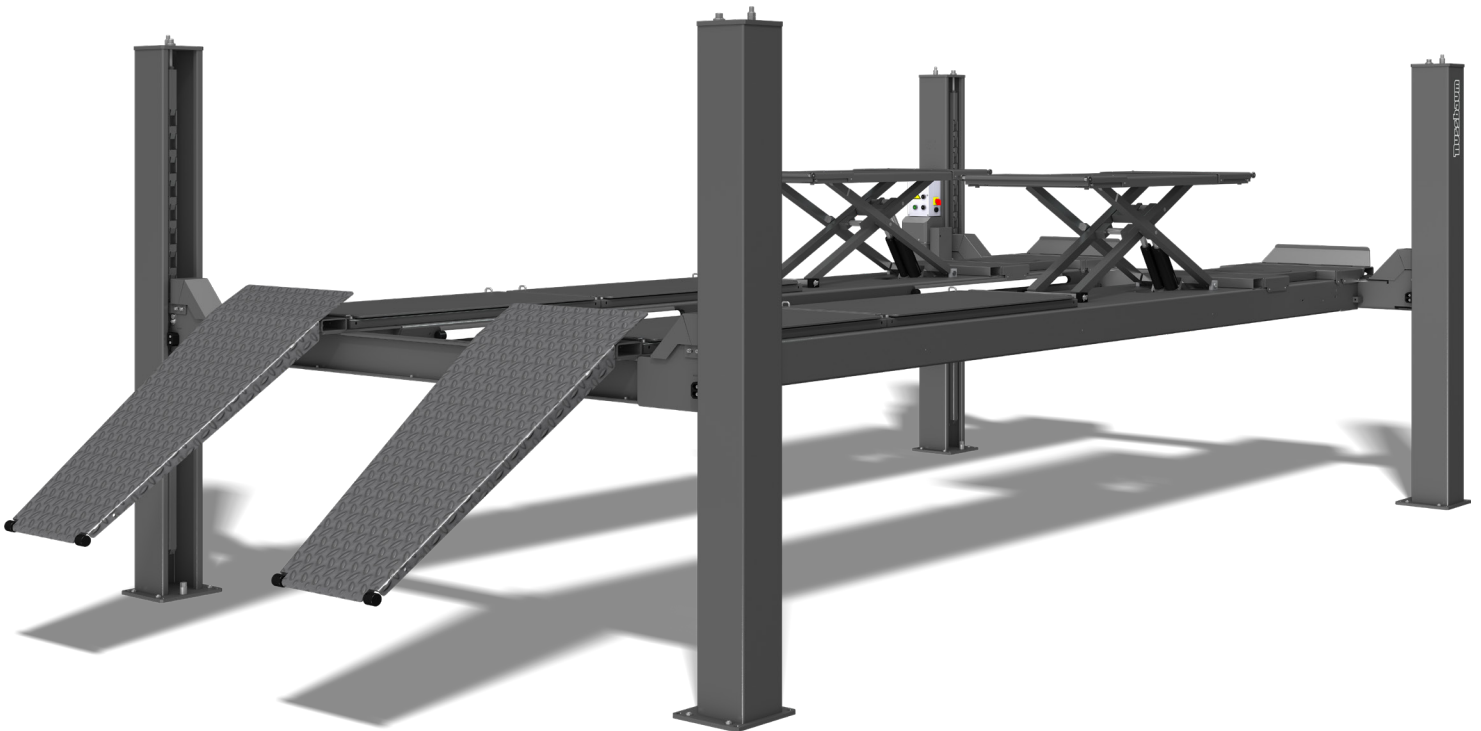




HYDRAULIC 4-POST LIFT

# COMBI LIFT

*ONE FOR ALL, ALL IN ONE*



## STURDY AND PRECIS

- ✓ For repair, tire service and reliable wheel alignment
- ✓ Numerous accessories available
- ✓ Flat runways with space saving ramps
- ✓ Silent oil-submerged power unit

**9000 LBS | 14500 LBS | 18000 LBS**

■ Made  
■ in  
■ Germany

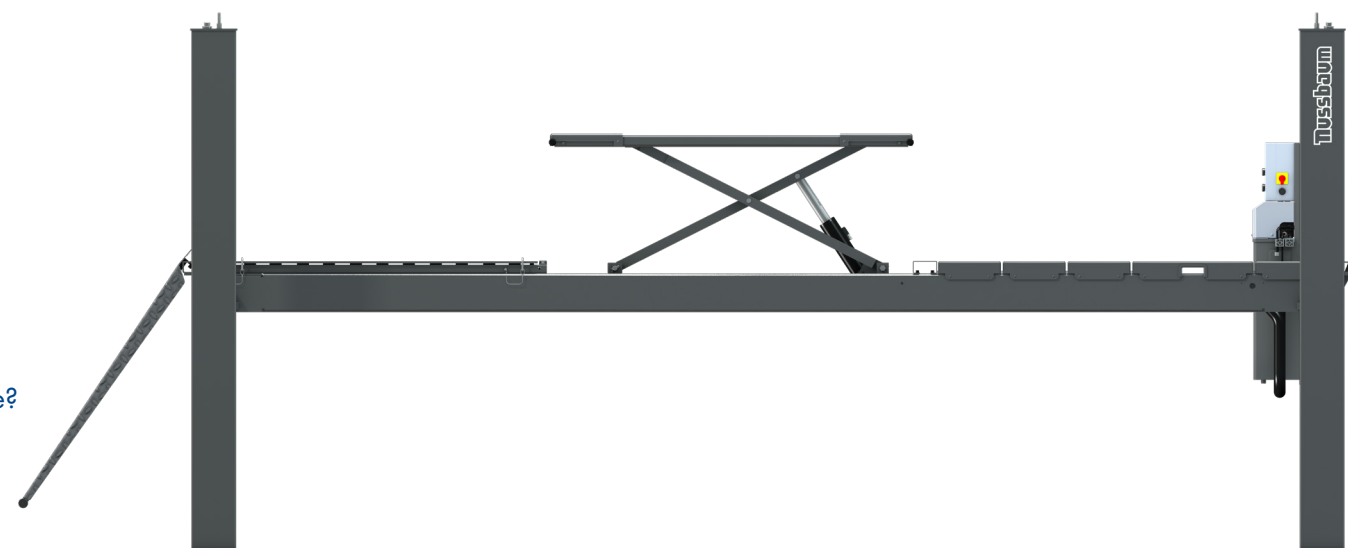


HYDRAULIC 4-POST LIFT

# COMBI LIFT

**A lift that will suit all your needs**

You want to make repairs, wheel alignment, or tire service?  
 You want a lift that can have it all?  
 The COMBI LIFT exists in different versions and one is made for you. German made quality for a reliable work on passenger cars and medium duty trucks.



## 3 accessories that will help you get everything out of your COMBI LIFT

Our **axle jack** Jax 6000 and Jax 7000, or our Jax 9000 lbs allow you to lift the vehicle wheel free at the axle.  
 Add our **lighting set** running along the whole runway, and your working comfort is complete.  
 We offer joint **play detectors** with integrated control buttons on the control torch for all models up to the COMBI LIFT 14.  
 Further accessories for wheel alignment are available.

### Reliable

- ✓ Powered by one hydraulic cylinder made IN GERMANY
- ✓ High capacity power unit with a submerged motor installed on the control column
- ✓ Control panel with push-button operation
- ✓ High precision in every locking position, locking position every 4"
- ✓ Level runways (Versions: STANDARD, ALIGNMENT, PLUS AMS, PLUS AMS<sup>2</sup>)
- ✓ Roller bearing slip plates for wheel-alignment



### FREE FLOOR

The absence of cables or connections under the lift allow for free movement and give you space for your equipment

### PLUS

Runway with adjustable wheel free lift with patented HyperFlow® Technology

### ALIGNMENT

Runway with wheel alignment set consisting of rear slide plates and front recesses for turntables (turntables not included)

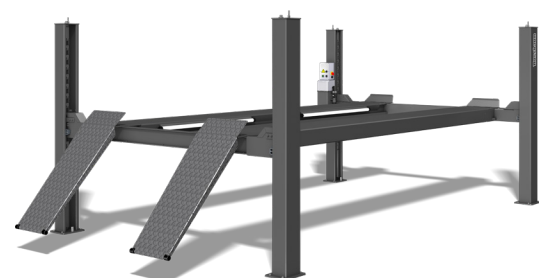
### PLUS AMS

Runway with wheel-free lift and wheel alignment set

### PLUS AMS<sup>2</sup>

Runway with offset wheel-free lift and wheel alignment set incl. double sliding plate

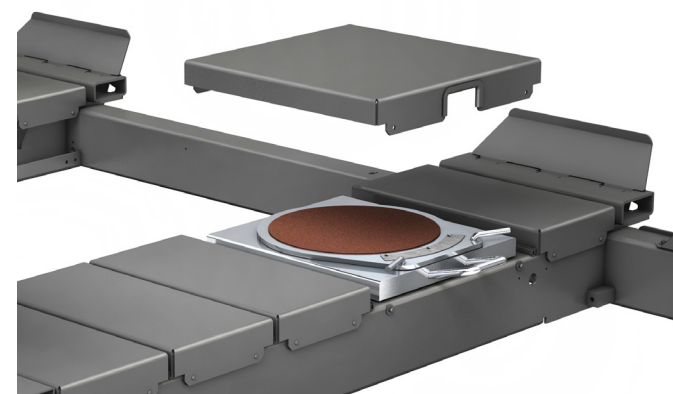
**COMBI LIFT 9, 14 & 18: WE OFFER THE RIGHT CAPACITY FOR ANY WORKSHOP**



COMBI LIFT STANDARD with flat runway



COMBI LIFT PLUS with wheel-free lift powered by hydraulic HyperFlow® technology



COMBI LIFT AMS Runway with recesses for turntables in front and sliding plates in the back

## YOUR BEST ALLY FOR WHEEL ALIGNMENT (AND EVERYTHING ELSE)

- Always precise
- Many options and accessories available
- Comes in 3 weight classes, from 9000 to 18000 lbs



## CHOOSE YOUR COMBI LIFT

COMBI LIFT	9	14	18
Lifting capacity (lbs)	9000*	14500	18000
Lifting / lowering time approx. (sec)	40 / 35	55 / 60	45 / 35
Lifting height (inch)	77 ¾"	78 ¾"	70 ¾"
Lifting height (inch) Version ALIGNMENT	79 ¾"	80 ¾"	-
Runway length (inch)	190"	225 ¼"	236"
Runway width (inch)	19 ½"	27 ½"	26 ¼"
Distance between runways (inch)	32 ¾"-38 ¾"	18 ¾"-36 ½"	31 ½"-47 ¼"
Drive-on height (inch)	6 ¼"	7 ¼"	8 ½"
Drive on height (inch) Version ALIGNMENT	8 ¼"	9 ¼"	-
Drive on height (inch) Version PLUS AMS	8 ¼"	9 ¼"	-
Total height column (inch)	85 ⅙"	95 ½"	91 ⅙"
Total length (inch)	242 ⅙"	272 ¼"	307"
Power supply (V/Hz/A)	208-230/50/20	208-230/50/20	208-230/50/20
Motor (hp)	4	4	4

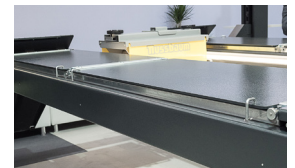
**\*Please note:** With the optional wheel free lift, the lifting capacity of COMBI LIFT 9 is reduced to 9000 lbs

WHEEL FREE LIFT (VERSION PLUS & PLUS AMS)	9	14
Lifting capacity wheel free lift (lbs)	6600	8000
Lifting/lowering time wheel free lift (sec)	15 / 5	12 / 8
Lifting height wheel free lift (inch)	20 ⅞"	20"
Platform length wheel free lift (inch)	60 ¼"-78 ¾"	58"-76 ¾"

### ACCESSORIES



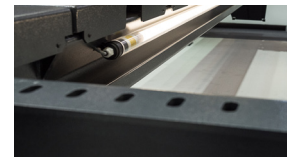
Jax 6000 / 7000 / 9000



Double sliding plate



Lighting 4 LED tubes



Adjustable runway distance

**More accessories available**