

HYDRAULIC 2-POST LIFT

# POWER LIFT HF 3S

**FULL VARIABILITY. TRIPLE SAFETY.**

WITH PATENTED  
**HyperFlow**<sup>®</sup>  
technology

WITH  
TECHNOLOGY



## THE FIRST CLASS 2-POST LIFT

- ✓ Triple safety: automatic safety lock plus two independent hydraulic circuits
- ✓ Variable width to fit your workshop needs
- ✓ Very low maintenance: no synchronization cables, no pulleys
- ✓ Lock positions for comfortable working
- ✓ Exceeds the strict specifications of the DIN EN 1493:2010

**7000 LBS | 8000 LBS | 9000 LBS**

Made  
in  
Germany

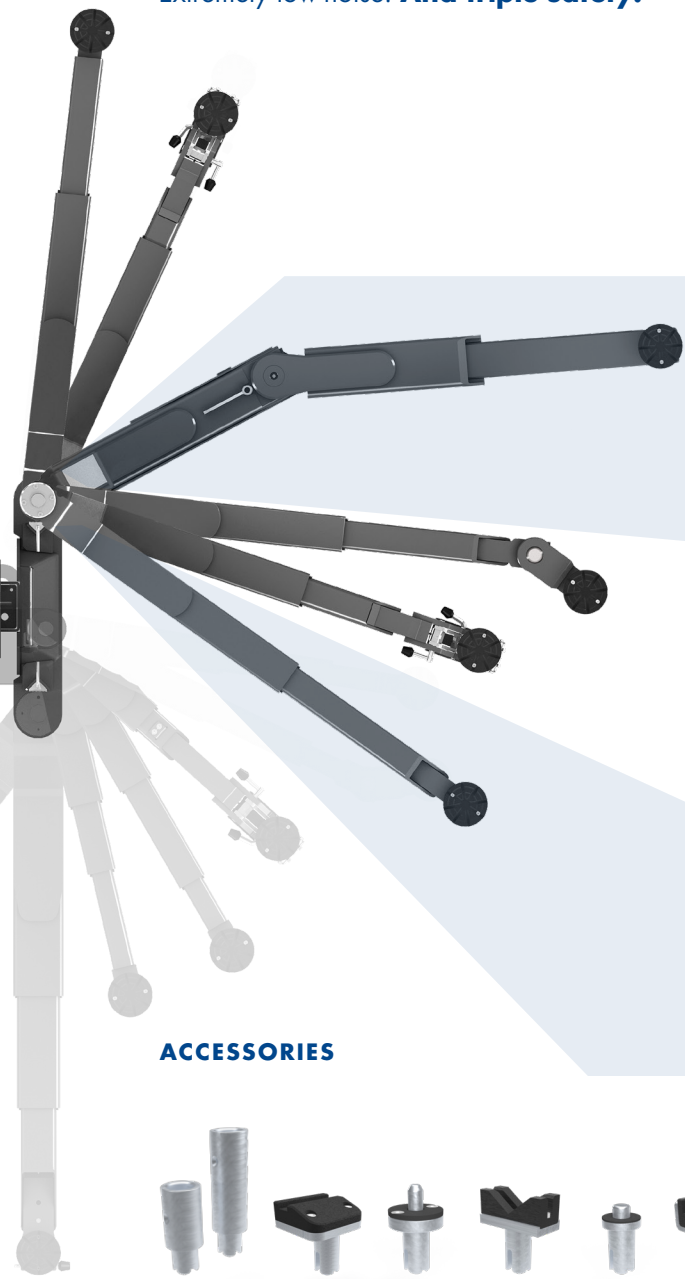


HYDRAULIC 2-POST LIFT

# POWER LIFT HF 3S

## Speed and Safety

Fastest lifting and lowering times, redundant safety, high productivity, intelligent features and life cycles up to 30 years: It is not without reason that NUSSBAUM lifts are among the world's leading equipment in automotive workshops. Now we have made our best technologies even better: the result is HF 3S, the newly developed hydraulic high-speed 2-column lift from NUSSBAUM. Simply fast. Variable precision lowering. Extremely low-noise. **And triple safety.**



**9000 LBS**



UNI - Arm  
The perfect partner for the transporter workshop

**OTTO 8000 LBS**

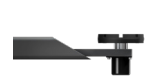


OTTO - Arm  
Perfect combination of double jointed and double telescopic arms



OTTO MM - Arm  
Additional comfort with Mini-Max arms

**8000 LBS**



DT - Arm  
Short arm has 3 stages



MM - Arm  
Ideal for deep drawn side skirt or off-road vehicles



LoPro - Arm  
Extremely flat construction



EV - Arm  
More flexibility for Electric Vehicles

**7000 LBS**



DT - Arm  
Short arm has 3 stages

**ACCESSORIES**



Full range of plug in adapters available. The perfect match for every gasoline, hybrid or fully electric vehicle.



**VARIABLE HEIGHT**

Maximum height of 193" with optional column extension

**PRECISE POSITIONING**

Smooth operation and variable lowering speed thanks to the NUSSBAUM-Commander

## POWER LIFT HF 3S: different versions suited to your needs

All versions delivered with asymmetric arms for optimum door clearance

- **DT (3 stage arms):** The short arm has 3 stages, enabling to pick up cars with outer pick-up points (7000 and 8000 lbs)
- **MM (Mini-Max lifting arms):** Ideal for deep drawn side skirt or off-road vehicles.
- **LoPro arms:** Extremely flat construction. Made of solid steel. Especially suitable for very low and wide sports cars (8000 lbs)
- **OTTO (Double-jointed arms):** For flexible pick-up of various cars. Very good accessibility to the sill and interior due to arm positioning under the vehicle (8000 lbs).
- **UNI (Universal 3 stage arms):** The HF 3S 9 features 3 stage arms that can reach all pick-up points. From MERCEDES Smart to transporters with long wheel base at alternative pick up points.
- **EV (Electric Vehicle arms):** Front part of the arms can be swivelled by 180° for optimum flexibility and underbody clearance for electric vehicles.



NUSSBAUM-Commander and complete energy set on column with electric outlet and pressurized air. Optional drill holder available.

## UNIQUE AND INNOVATIVE

- **Low electricity consumption**
- **NT Technology:** 4 cylinders and 2 independent hydraulic circuits
- **HyperFlow® Technology:** Automatic purging of the hydraulic system in the highest position, automatic synchronization of the arms
- **Less moving parts, less maintenance**



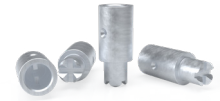
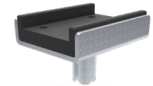
## MEASURED FOR SUCCESS

<b>POWER LIFT HF 3S</b>	<b>7</b>	<b>8</b>	<b>9</b>	
<b>Lifting capacity (lbs)</b>	<b>7000</b>	<b>8000</b>	<b>9000</b>	
<b>Lifting height (inch)</b>	<b>78 ½"</b>	<b>79"</b>	<b>80 ¾"</b>	
<b>Lowest lifting point (inch)</b>	Version DT	<b>3 ¾" - 5 ½"</b>	<b>3 ¾" - 5 ½"</b>	-
	Version MINI-MAX	-	3"-7 ¼"	-
	Version LoPro	-	3 ¼"-4 ¾"	-
	Version UNI	-	-	4 ½"-7 ½"
<b>Total height column (inch)</b>	<b>159"</b>	<b>159"</b>	<b>159"</b>	
<b>Total height with riser pipe (inch)</b>	<b>161 ½" - 193"</b>	<b>161 ½" - 193"</b>	<b>161 ½" - 193"</b>	
<b>Recommended total width (inch)</b>	Version DT	<b>122"</b>	<b>127"</b>	-
	Version MINI-MAX	-	132"	-
	Version UNI	-	-	132"
<b>Column distance (inch)</b>	Version DT	<b>100 ¾"</b>	<b>104 ⅛"</b>	-
	Version MINI-MAX	-	112"	-
	Version UNI	-	-	108 ¾"
<b>Arm-extraction long (inch)</b>	Version DT	<b>37" - 58 ¾"</b>	<b>37" - 58 ¾"</b>	-
	Version MINI-MAX	-	39 ⅝"-58 ¼"	-
	Version LoPro	-	33"-54 ¼"	-
	Version UNI	-	-	44 ½"-72 ½"
<b>Arm-extraction short (inch)</b>	Version DT	<b>18 ⅞" - 34 ¼"</b>	<b>22 ½" - 45 ⅝"</b>	-
	Version MINI-MAX	-	23 ⅝"-35 ⅝"	-
	Version LoPro	-	23 ¼"-34"	-
	Version UNI	-	-	22 ¼"-45 ⅝"
<b>Power supply (V/Ph/Hz/A)</b>	<b>230 / 1 / 60 / 20</b>	<b>230 / 1 / 60 / 20</b>	<b>230 / 1 / 60 / 20</b>	

DT: 3 stage arms

LoPro: Extra low "sports car" arms (3 ¼" clearance)

### ACCESSORIES

Pad extension 3". Set=4 units  
Item n°.: 0029159Pad extension 5,5". Set=4 units  
Item n°.: 0029161U-Pad Set= 4 units  
Item n°.: 0029146

### More accessories available